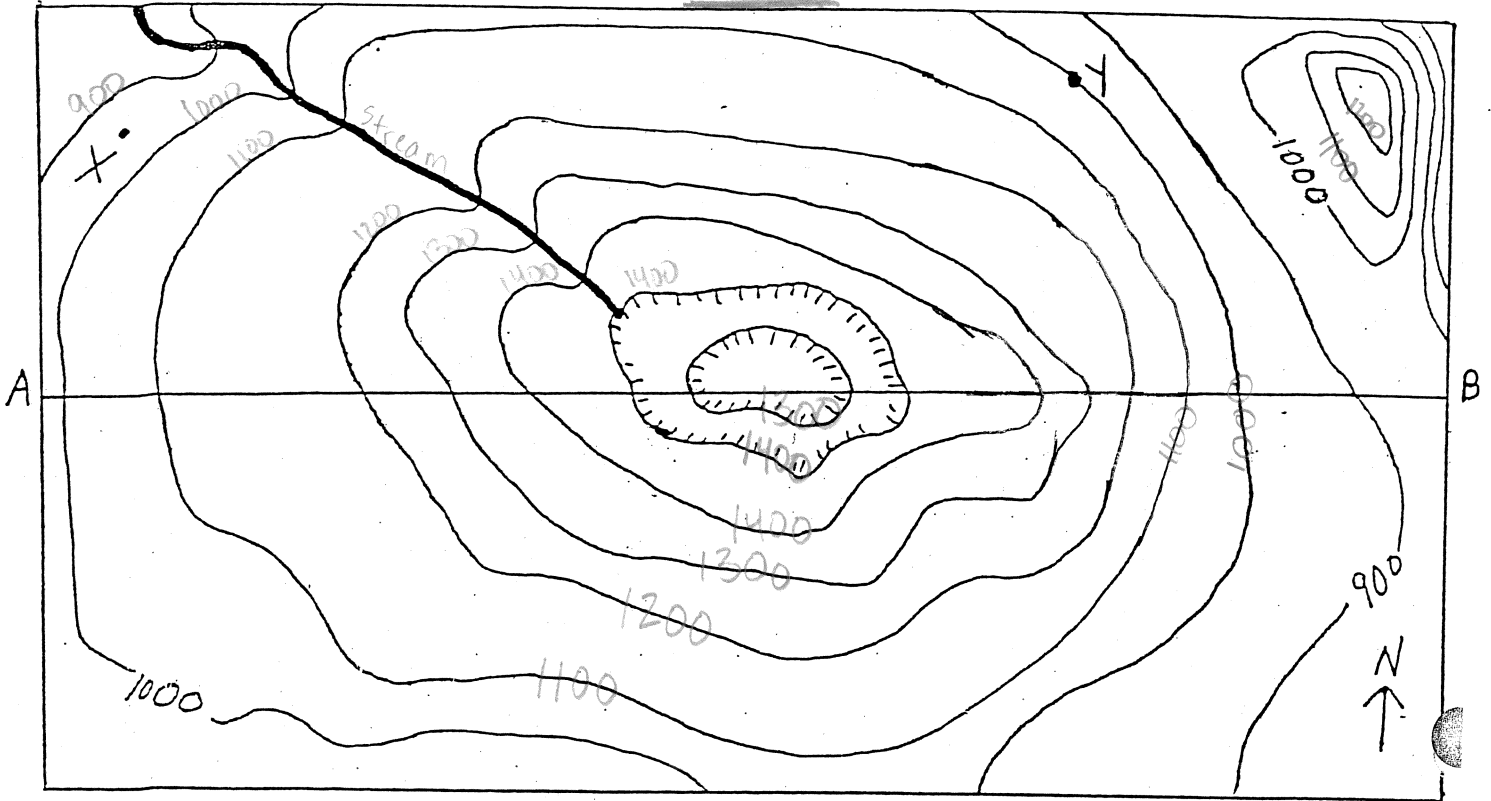


Key

Introduction to Topographic Maps

Contour interval = 100 feet




1. Label the contour lines.

2. What is the contour interval? 100 feet

3. Give two ways to determine the direction the stream is flowing:

1. Stream flows downhill from high elevation to low elevation.

2. Streams flow opposite the direction that the contour lines bend. / Rivers bend upstream

4. In what compass direction is the stream flowing? NW 

5. What is the approximate elevation at point X? 950 feet

6. What is the elevation of point Y? 1000ft

7. What is the maximum possible elevation of the hill located in the NorthEast corner? 1299 ft

8. What is the range of possible depths for the depression at the center of the map? 1400-1201

9. Which side of the hill has the steepest slope? North East

10. Explain how you know. The contour lines are closer together

11. When contour lines cross a stream, do they bend upstream or downstream? Upstream

*1 less than next contour line would be*

