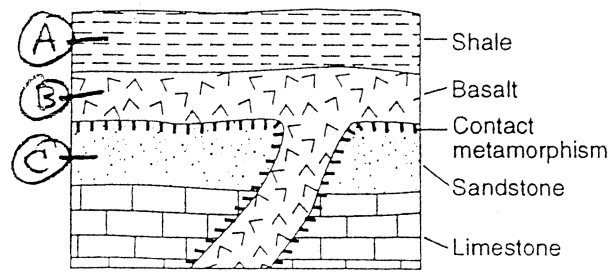


QUESTION

1) Describe the relative age of the basalt, shale, and ~~sandstone~~ sandstone and explain your answer.

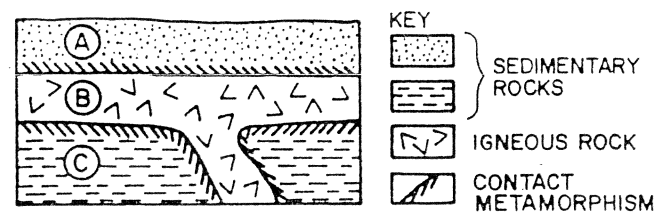


Oldest → youngest

Sequence:

Explanation:

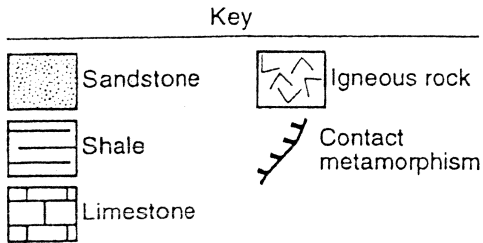
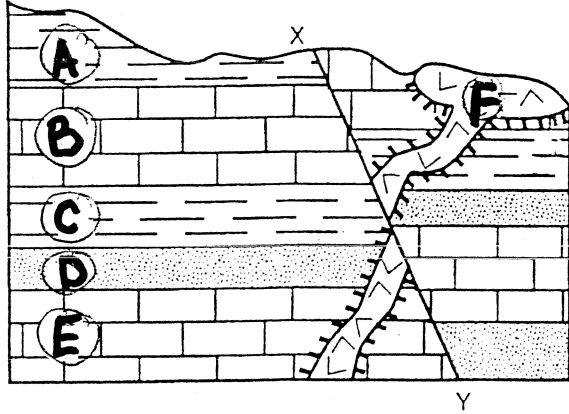
2) Describe the relative age of the sandstone, (A) the igneous rock, and the shale (C) and explain your answer.



Sequence:

Explanation:

Base your answers to questions 3 through 5 on the diagram below. A geologic cross section for a portion of Earth's crust is shown below. Letters A-F represent different rock layers, and line XY represents a fault.



3. Write down the sequence of events that produced the cross section above, starting with the oldest. You must use letters A-F and Fault XY. Provide evidence to support when the fault XY occurred.

---

---

---

---

---

---

---

---

---

---

4. In which layer would fossils be least likely to be found?

5. Which rock layer has not been altered at any point by intense heat?

---

Write down why you think Fault XY occurred when it did.

---

---

---

---

---