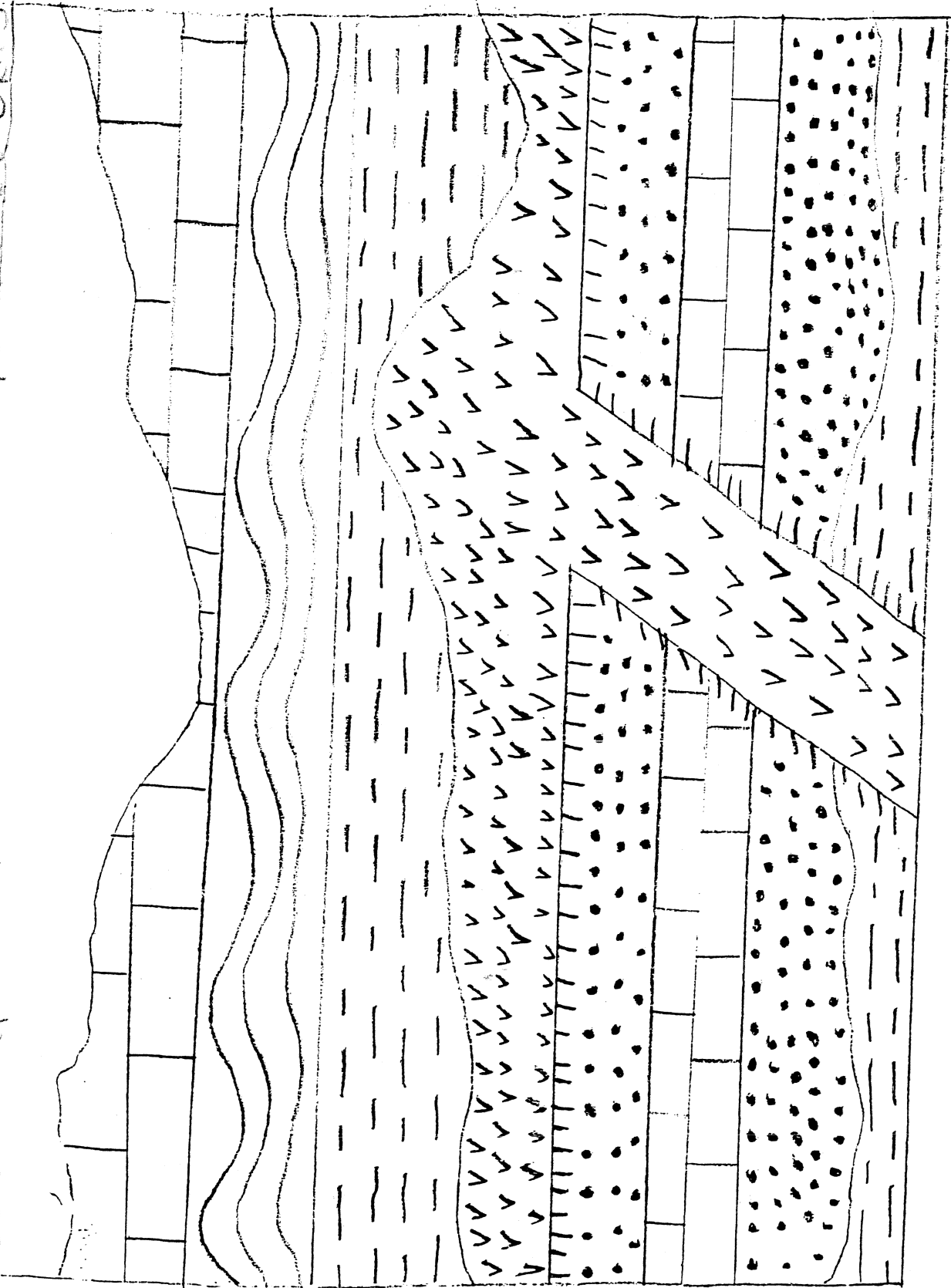

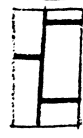

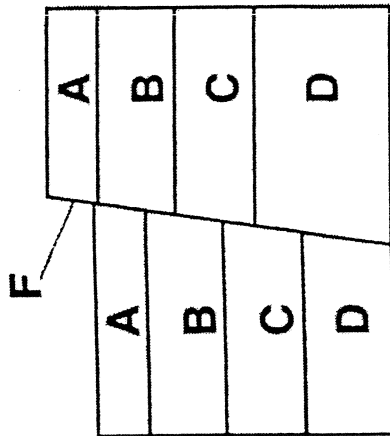


sequence in order in which the rock layers were deposited, folded and/or faulted. Oldest → Young



-  SHALE
-  LIMESTONE
-  SANDSTONE
-  IGNEOUS INTRUSION
-  SLATE

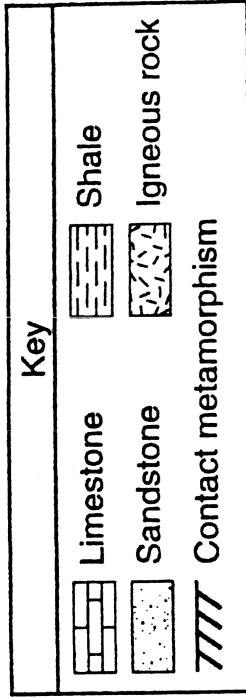
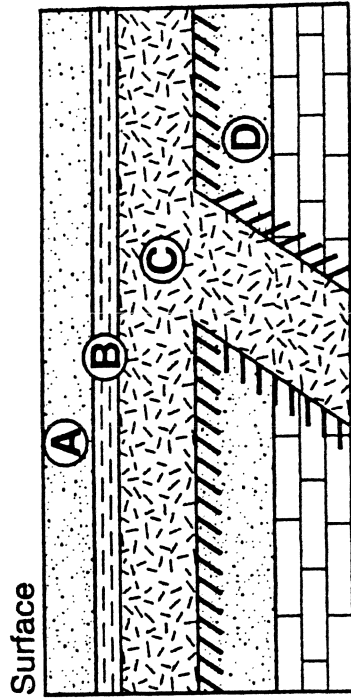
2. The cross section below shows rock layers A, B, C, D, and fault F. The rock layers have not been overturned.



Which sequence places the rock layers and fault in order from oldest to youngest?

- (1) D → C → B → A → F
- (2) A → B → C → D → F
- (3) F → D → C → B → A
- (4) F → A → B → C → D

3. The diagram below shows a geologic cross section. Letters A through D represent different rock units.



Which sequence correctly shows the age of the lettered rock units, from oldest to youngest?

- (1) A → B → C → D
- (2) C → D → A → B
- (3) D → B → A → C
- (4) D → C → B → A