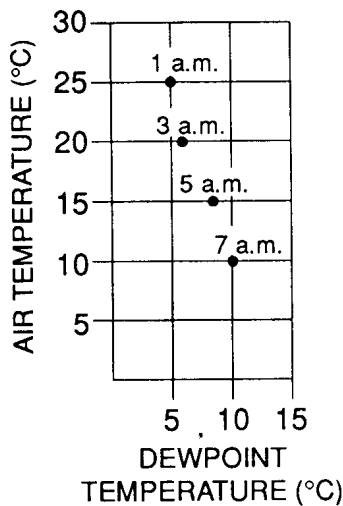


Weather Practice Qs

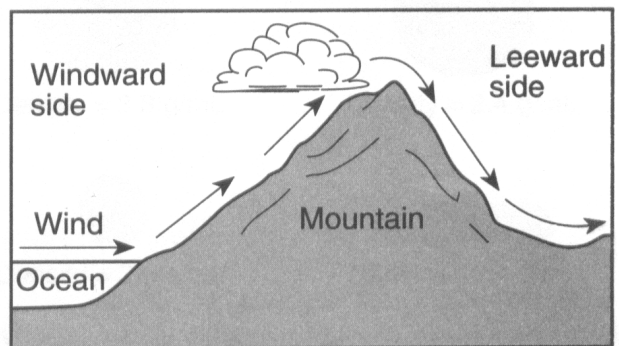
- What is the relative humidity when the dry-bulb temperature is 16°C and the wet-bulb temperature is 14°C ?
 A) 90% B) 80% C) 14% D) 13%
- An observer measured the air temperature and the dewpoint and found the difference between them to be 12°C . One hour later, the difference between the air temperature and the dewpoint was found to be 4°C . Which statement best describes the changes that were occurring?
 A) The relative humidity was decreasing and the chance of precipitation was decreasing.
 B) The relative humidity was decreasing and the chance of precipitation was increasing.
 C) The relative humidity was increasing and the chance of precipitation was decreasing.
 D) The relative humidity was increasing and the chance of precipitation was increasing.
- Base your answer to the following question on The graph below shows the air temperature and dewpoint temperature at one location at four different times during one morning.



At what time was the chance of precipitation the greatest?

- A) 1 a.m. B) 5 a.m. C) 3 a.m. D) 7 a.m.
- The dewpoint changes most directly as a result of changes in the atmosphere's
 A) pressure B) wind direction
 C) convection currents D) water vapor content
 - Air pressure is usually highest when the air is
 A) cool and humid B) cool and dry
 C) warm and humid D) warm and dry
 - A temperature of 104°F is approximately equal to
 A) 220°C B) 214°C C) 43°C D) 40°C
 - Which weather change is most likely indicated by rapidly falling air pressure?
 A) Humidity is decreasing.
 B) Temperature is decreasing.
 C) Skies are clearing.
 D) A storm is approaching.

- Which processes of the water cycle return water vapor directly to the atmosphere?
 A) evaporation and transpiration
 B) infiltration and capillarity
 C) freezing and precipitation
 D) water retention and runoff
- Under which atmospheric conditions will water most likely evaporate at the fastest rate?
 A) hot, humid, and calm B) hot, dry, and windy
 C) cold, humid, and windy D) cold, dry, and calm
- What is the dewpoint when the air temperature is 26°C and the relative humidity is 77%?
 A) 3°C B) 20°C C) 22°C D) 23°C
- What is the dewpoint when the dry-bulb temperature is 24°C and the wet-bulb temperature is 21°C ?
 A) 16°C B) 18°C C) 20°C D) 21°C
- What is the relative humidity if the dry-bulb temperature is 22°C and the wet-bulb temperature is 17°C ?
 A) 5% B) 14% C) 60% D) 68%
- The diagram below shows how prevailing winds cause different weather conditions on the windward and leeward sides of a mountain range.

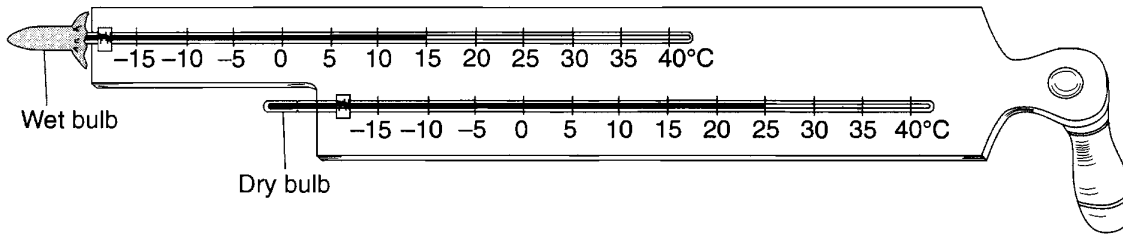


Clouds usually form on the windward sides of mountains because this is where air

- A) rises and cools B) rises and warms
 C) sinks and cools D) sinks and warms
- Clouds usually form when
 A) air temperature reaches the dewpoint
 B) evaporation has warmed the surrounding air
 C) relative humidity is 0%
 D) condensation nuclei have been removed from the air
 - In order for clouds to form, cooling air must be
 A) saturated and have no condensation nuclei
 B) saturated and have condensation nuclei
 C) unsaturated and have no condensation nuclei
 D) unsaturated and have condensation nuclei

Weather Practice Qs

16. Base your answer to the following question on The diagram below shows the temperature readings on a weather instrument.



Based on these readings, the relative humidity of the air is closest to

- A) 8% B) 11% C) 32% D) 60%

Answer Key
RHDEWClouds

1. B
 2. D
 3. D
 4. D
 5. B
 6. D
 7. D
 8. A
 9. B
 10. C
 11. C
 12. C
 13. A
 14. A
 15. B
 16. C
-